



Maxforce[®]

FC MAGNUM

ROACH KILLER BAIT GEL

Note: Do not remove this label. Use only in areas not easily accessible to children and pets.

ACTIVE INGREDIENT: Fipronil† 0.05%

OTHER INGREDIENTS: 99.95%

TOTAL: 100.00%

†CAS NO. 120068-37-3

EPA Reg. No. 432-1460

EPA Est. No. 071106-GA-003

**KEEP OUT OF REACH OF CHILDREN
AND PETS**

CAUTION

Harmful if absorbed through skin. Causes moderate eye irritation. Avoid contact with skin, eyes, and clothing. Wash thoroughly with soap and water after handling and before eating, drinking, chewing gum, or using tobacco.

CONTAINER HANDLING: If empty: Do not reuse container. Place in trash or offer for recycling if available. If partly filled: Call your local solid waste agency or 1-800-CLEANUP for disposal instructions.

Never place unused product down any indoor or outdoor drain. If you have questions regarding the use of this product, call toll free 1-800-331-2867.

May stain textiles, fabrics and/or porous surfaces. Refer to leaflet for complete First Aid, Directions for Use, Precautionary Statements and Storage and Disposal Instructions.

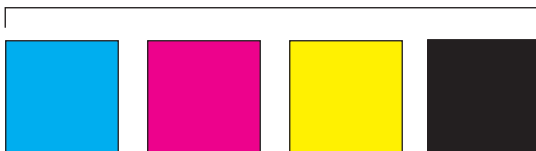
Produced for:

Bayer Environmental Science
A Division of Bayer CropScience LP
 2 T. W. Alexander Drive
 Research Triangle Park, NC 27709
 Product of China

Net Wt. 33g (1.16 Oz)
 79432135 80211538C 140410AV1

Bayer

Process



Cyan

Magenta

Yellow

Black

Spot



PMS 187

Entire label to be UV coated with High Gloss Varnish applied to following images.

FC MAGNUM



Maxforce[®]

FC MAGNUM

ROACH KILLER BAIT GEL

79432135

80215495C 140410AV1

FOR USE IN COMMERCIAL, INDUSTRIAL AND RESIDENTIAL AREAS

Long lasting control
No vapor, fumes or odor

For indoor and outdoor use
Kills roaches quickly

See visible results overnight

ACTIVE INGREDIENT: Fipronil*: [5-Amino-1-(2, 6-dichloro-4-trifluoromethyl) phenyl)-4-(1, R, S) -(trifluoromethyl) sulfinyl)-1H-pyrazole-3-carbonitrile]	0.05%
OTHER INGREDIENTS:	99.95%
TOTAL:	100.00%

*CAS NO. 120068-37-3

EPA Reg. No. 432-1460

EPA Est. No. 071106-GA-003

**STOP - READ THE LABEL
BEFORE USE.
KEEP OUT OF REACH OF
CHILDREN.
CAUTION**

Kills roaches in their harborage.

Inject bait into cracks and crevices or apply as a spot where roaches harbor or enter a structure.

This product effectively controls large roachest.

This product contains Fipronil, a fast-acting active ingredient that kills American roaches. This product controls large roach[†] populations in 8 days.

DIRECTIONS FOR USE

It is a violation of Federal Law to use this product in a manner inconsistent with its labeling.

Use Maxforce[®] FC Magnum Roach Killer Bait Gel as a spot or crack and crevice treatment for the indoor and outdoor (adjacent to homes & structures) control of cockroaches in residential areas and the non-food/non-feed areas of institutional, warehousing and commercial establishments, including warehouses, restaurants, food processing plants, supermarkets, hospitals, nursing homes, motels, hotels, apartment buildings, bakeries, beverage plants, breweries, bottling facilities, candy plants, canneries, cereal processing and manufacturing plants, dairies and dairy product processing plants, frozen food plants, schools, laboratories, computer facilities, sewers, "aircraft," buses, boats/ships, trains, homes, houses, industrial buildings, office buildings, kennels, kitchens, manufacturing facilities, spice plants, stores, wineries and similar structures, mausoleums, meat processing and packaging plants, meat and vegetable canneries, pet shops, and zoos. Non-food/non-feed areas include bedrooms, living rooms, bathrooms, closets, media rooms, garbage rooms, lavatories, entries, and vestibules, offices, locker rooms, machine rooms, boiler rooms, garages, mop closets, and storage (after canning or bottling). This product may also be used in food/feed areas of food/feed handling establishments as outlined below.

May stain textiles, fabrics, and/or porous surfaces.

USE RESTRICTIONS

Do not treat food preparation surfaces. Keep gel away from foods and food contact surfaces. Do not apply bait gel to areas which have been recently sprayed with insecticide, and do not spray insecticide over gel as it may cause the bait to become repellent. **USE ONLY IN AREAS NOT EASILY ACCESSIBLE TO CHILDREN AND PETS.** In pet shops and zoos place bait out of reach of pets and zoo animals.

APPLICATION DIRECTIONS

Application rate for all uses: Application rate varies according to the level of infestation and species to be controlled. Apply gel as round spots or thin beads into cracks and crevices or as a spot treatment. Place bait close to cockroach harborage, foraging, and feeding areas such as corners and cracks and crevices. Numerous smaller bait placements provide faster control than fewer larger placements. In cases of severe infestation and areas with excessive clutter or alternative food sources that cannot be eliminated, use the higher rate of application.

German Cockroaches, Brown Banded Cockroaches, and stored product pests:

For use in **maintenance programs** where regular [monthly, quarterly] applications are made for continuous control of cockroach populations,

Product may stain textiles and clothing.

FIRST AID	
If on skin or clothing:	<ul style="list-style-type: none"> Take off contaminated clothing. Rinse skin immediately with plenty of water for 15-20 minutes. Call a poison control center or doctor for treatment advice.
If in eyes:	<ul style="list-style-type: none"> Hold eye open and rinse slowly and gently with water for 15-20 minutes. Remove contact lenses, if present, after the first 5 minutes, then continue rinsing. Call a poison control center or doctor for treatment advice.
Have the product container or label with you when calling a poison control center or doctor or going for treatment. You may also contact 1-800-334-7577 for emergency medical treatment information.	

PRECAUTIONARY STATEMENTS:

HAZARDS TO HUMANS AND DOMESTIC ANIMALS

CAUTION

Harmful if absorbed through skin. Causes moderate eye irritation. Avoid contact with skin, eyes, and clothing. Wash thoroughly with soap and water after handling and before eating, drinking, chewing gum, or using tobacco.

PHYSICAL AND CHEMICAL HAZARDS: Do not use this product in or on electrical equipment where a possibility of shock hazard exists.

Long lasting control

No vapor, fumes or odor

For indoor and outdoor use

Kills roaches quickly

See visible results overnight

† American, Oriental, Brown, Smoky Brown

Provides FAST CONTROL in 2 days (German roaches).

Dual Action kills roaches two ways.

Contains Fipronil, which kills roaches by ingestion and contact. After foraging roaches either eat or contact the bait, they return to the harborage and kill other roaches.

continued on back

4.875"

7.75"

use 0.75 grams of bait per square yard. This rate will not provide fast control of existing infestations.

For **light to moderate infestations** (or for retreatments), use up to 1.5 grams of bait per square yard.

To **clean out severe or heavy infestations**, use up to 3.0 grams of bait per square yard.

Large cockroaches such as American, Smokey-Brown or Oriental: 1 to 2 grams of bait per square yard."

Bait Quantity Reference Table

Approximate weight per spot diameter	Approximate weight per bead length
0.1 gm = ¼ inch diameter spot	1/3 gram = 1.5 inch bead
1.0 gm = Dime size spot	2/3 gram = 3.0 inch bead
1.5 gm = Quarter size spot	1 1/3 gram = 6 inch bead

Place bait under baseboards, sinks, countertops, seats, around water pipes, water heaters, dishwasher equipment, in crack and crevices as well as voids where insects harbor.

PANTRY PESTS: To control exposed, adult stages of beetles: cadelle, cigarette beetle, confused flour beetle, dermestid, drugstore beetle, flat grain beetle, granary weevil, lesser grain borer, lesser mealworm, mealworm, merchant grain beetle, red flour beetle, rice weevil, rusty grain beetle, saw-toothed grain beetle, spider beetle, or warehouse beetle. After removing infested foodstuffs and cleaning up spilled foodstuffs and dust, applications of this product will kill adult stages of beetles remaining in area. Apply in voids, cracks and crevices, behind and under cupboards, and other difficult to reach areas where insects may hide. Application rate is dependent on level of infestation.

Applications in Food/Feed Handling Establishments: Application within food/feed areas of food/feed handling establishments is limited to crack and crevice treatment only. If gel contacts an exposed surface where food is handled, remove gel and wash exposed surface with an effective cleaning compound followed by a potable water rinse prior to use. Apply with Maxforce Bait Injector directly into cracks and crevices. Place applicator tip 1/2 inch into cracks, crevices, holes and other small openings where roaches may be a problem. Apply small amounts of gel.

Use Restrictions in Food/Feed Handling Establishments:

Do not apply bait to areas where food/feed, utensils, or processing surfaces may become contaminated. Do not apply bait to areas that are routinely washed such as cracks and crevices in tops of tables, food/feed preparation, and prepared food holding surfaces as bait may be removed by washing. Do not apply bait to surfaces where the temperature exceeds 130°F as bait may run. Examples include, but are not limited to, portions of stoves, ovens, grills, fume hoods, heat lamps, coffee urns, steam tables, toasters, fryers, dishwashers, and hot water pipes. Care should be taken to avoid depositing gel onto exposed surfaces. If gel contacts an exposed surface, remove gel and wash exposed surface.

Food/feed areas include areas for receiving, storage, packing (canning, bottling, wrapping, boxing), preparing edible waste storage, and enclosed processing systems (mills, dairies, edible oils, syrups). Serving areas are also considered a food/feed area when food is exposed and facility is in operation. Apply bait in small amounts between different elements of construction, between equipment and floors, openings leading into voids and hollow spaces in floors, walls, ceilings, equipment legs and bases, around plumbing pipes, doors and windows, behind and under refrigerators, cabinets, sinks, closets, stoves, and other equipment where cockroaches hide. During follow-up visits inspect bait placements and reapply when necessary.

Application of this product in food/feed areas of food/feed handling establishments other than as a crack and crevice treatment is not permitted.

Gel placements should be at or near harborages or aggregation areas, such as corners or cracks and crevices. Numerous smaller placements will provide faster control than fewer larger spots, especially for German cockroach control.

For outdoor use (adjacent to home -or- structure): Place bait in areas adjacent to structures where [large] roaches may nest or breed. Apply bait to potential points of insect entry, such as eaves, sills, and expansion joints.

Apply bait in protected areas whenever possible. Environmental stresses such as direct sunlight and water will reduce the residual effectiveness. Priority treatment areas may be identified by visual inspection of such

areas listed above or aided by trapping techniques or spot flushing.

Refillable stations: Maxforce FC Magnum Roach Killer Bait Gel may be placed into refillable bait stations designed for interior or exterior use; when placing bait in stations do not exceed 1 gm (1/5 teaspoon) and do not exceed the capacity of the stations. Close the station securely after application. During follow up visits inspect placements and reapply as needed.

Directions for loading reservoirs and operation:

1. With the teeth the drive rod facing up, pull the drive rod all the way back. If the drive rod is initially hard to move, simply un-screw (turn counter-clockwise) the black portion of the applicator that holds the gel reservoir until the drive rod moves easily.
2. Attach a pre-filled reservoir of gel with a twist-locking motion. Remove the outlet cap and attach a dispensing tip. Break-tip Reservoir: Prior to use, break the snip-tip closed end of the gel reservoir at the scored line. After use, the reservoir may be resealed with the enclosed black outlet cap. The black outlet cap is reusable.
3. Turn the knob of the drive rod so that the teeth are facing down and move it slightly forward so that the trigger mechanism will engage. Squeeze the trigger until the drive plunger seats against the piston in the gel reservoir. Gently squeeze the trigger until the gel flows out.
4. If gel continues to flow after the trigger is released, simply un-screw the portion of the bait applicator that holds the reservoir to a point where gel does not continue to flow after the trigger is released.

Directions for changing reservoirs: With the arrow on the drive rod pointing up, pull the drive rod out as far as it will go. Remove the empty reservoir and follow instructions in the Storage and Disposal box. Reservoirs that still contain gel can be sealed with the end cap and outlet cap for future use. To attach a new reservoir follow the above directions. Pest population reduction will be apparent within 1 day for German roaches and 3-4 days for American roaches.

STORAGE AND DISPOSAL

Do not contaminate water, food or feed by storage or disposal. **STORAGE:** Store in a cool, dry area out of reach of children. **CONTAINER HANDLING:** If Empty: Do not reuse container. Place in trash or offer for recycling if available. If Partly Filled: Call your local solid waste agency or 1-800-CLEANUP for disposal instructions. Never place unused product down any indoor or outdoor drain. If you have questions regarding the use of this product, please call 1-800-331-2867.

IMPORTANT: READ BEFORE USE

Read the entire Directions for Use, Conditions, Disclaimer of Warranties and Limitations of Liability before using this product. If terms are not acceptable, return the unopened product container at once.

By using this product, user or buyer accepts the following Conditions, Disclaimer of Warranties and Limitations of Liability.

CONDITIONS: The directions for use of this product are believed to be adequate and must be followed carefully. However, it is impossible to eliminate all risks associated with the use of this product. Crop injury, ineffectiveness or other unintended consequences may result because of such factors as weather conditions, presence of other materials, or the manner of use or application, all of which are beyond the control of Bayer CropScience LP. All such risks shall be assumed by the user or buyer.

DISCLAIMER OF WARRANTIES: TO THE EXTENT CONSISTENT WITH APPLICABLE LAW, BAYER CROPSCIENCE LP MAKES NO OTHER WARRANTIES, EXPRESS OR IMPLIED, OF MERCHANTABILITY OR OF FITNESS FOR A PARTICULAR PURPOSE OR OTHERWISE, THAT EXTEND BEYOND THE STATEMENTS MADE ON THIS LABEL. No agent of Bayer CropScience LP is authorized to make any warranties beyond those contained herein or to modify the warranties contained herein. TO THE EXTENT CONSISTENT WITH APPLICABLE LAW, Bayer CropScience LP disclaims any liability whatsoever for special, incidental or consequential damages, resulting from the use or handling of this product.

LIMITATIONS OF LIABILITY: TO THE EXTENT CONSISTENT WITH APPLICABLE LAW, THE EXCLUSIVE REMEDY OF THE USER OR BUYER FOR ANY AND ALL LOSSES, INJURIES OR DAMAGES RESULTING FROM THE USE OR HANDLING OF THIS PRODUCT, WHETHER IN CONTRACT, WARRANTY, TORT, NEGLIGENCE, STRICT LIABILITY OR OTHERWISE, SHALL NOT EXCEED THE PURCHASE PRICE PAID, OR AT BAYER CROPSCIENCE LP'S ELECTION, THE REPLACEMENT OF PRODUCT.

Bayer (reg'd), the Bayer Cross (reg'd) and MAXFORCE® are registered trademarks of Bayer.

Produced for:
 Bayer Environmental Science
 A Division of Bayer CropScience LP
 2 T. W. Alexander Drive
 Research Triangle Park, NC 27709

Bayer



Maxforce[®]
FC MAGNUM

ROACH KILLER BAIT GEL

For **MEDICAL** and **TRANSPORTATION** Emergencies
ONLY Call 24 Hours A Day 1-800-334-7577
For **PRODUCT USE** Information Call 1-800-331-2867

Product may stain textiles and clothing.

FIRST AID	
If on skin or clothing:	<ul style="list-style-type: none"> Take off contaminated clothing. Rinse skin immediately with plenty of water for 15-20 minutes. Call a poison control center or doctor for treatment advice.
If in eyes:	<ul style="list-style-type: none"> Hold eye open and rinse slowly and gently with water for 15-20 minutes. Remove contact lenses, if present, after the first 5 minutes, then continue rinsing. Call a poison control center or doctor for treatment advice.
<p>Have the product container or label with you when calling a poison control center or doctor or going for treatment. You may also contact 1-800-334-7577 for emergency medical treatment information.</p>	

PRECAUTIONARY STATEMENTS
HAZARDS TO HUMANS AND DOMESTIC ANIMALS

CAUTION. Irritant if absorbed through skin. Causes moderate eye irritation. Avoid contact with skin, eyes, and clothing. Wash thoroughly with soap and water after handling and before eating, drinking, or preparing food.
PHYSICAL AND CHEMICAL HAZARDS: Do not use this product in or on electrical equipment where a possibility of shock hazard exists.

STORAGE AND DISPOSAL
Do not contaminate water, food or feed by storage or disposal. **STORAGE:** Store in a cool, dry area out of reach of children. **CONTAINER HANDLING:** If Empty: Do not reuse container. Place in trash or other recycling if available. If Partially Full: Call local solid waste agency or 1-800-CLEANUP for disposal instructions. Never place unused product down any drain or in waterway.
If you have questions regarding the use of this product, please call 1-800-331-2867.

See inside leaflet for complete First Aid Instructions, Precautionary Statements, Directions for Use and Storage and Disposal Instructions.

Bayer

Produced for:
Bayer Environmental Science
A Division of Bayer CropScience LP
21 W. Alexander Drive
Research Triangle Park, NC 27709
Product of China

ROACH KILLER BAIT GEL

FOR USE IN COMMERCIAL, INDUSTRIAL AND RESIDENTIAL AREAS
ACTIVE INGREDIENT: Fipronil* [5-Amino-1-(2, 6-dichloro-4-trifluoromethyl phenyl)-4-(1, R, S)-(trifluoromethyl) sulfinyl]-1H-pyrazole-3-carbonitrile] 0.05%
OTHER INGREDIENTS: 99.95%
Total: 100.00%
*CAS NO. 120068-37-3

79432135 EPA Reg. No. 432-1460
80183798C 140410AV1 EPA Est. No. 071106-GA-003

STOP - READ THE LABEL BEFORE USE.
KEEP OUT OF REACH OF CHILDREN.
CAUTION

Contains:
1 Reservoir
Net Weight
33g (1.16 Oz)



Maxforce[®]
FC MAGNUM



Maxforce[®]
FC MAGNUM

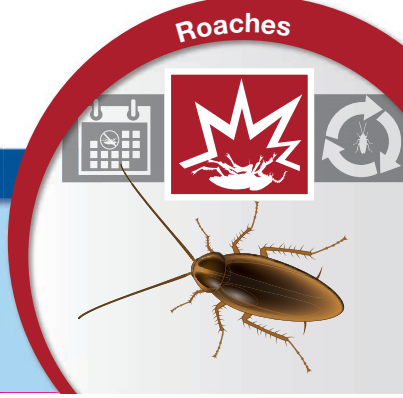
Open this end

ROACH KILLER BAIT GEL

Maxforce[®]
FC MAGNUM



ROACH KILLER BAIT GEL



Maxforce[®]
FC MAGNUM

ROACH KILLER BAIT GEL

Open this end



(01)00785740139790

6 1/8

5/8

17/32

2 1/4

1 1/4